

## Product information

Lucia is an ever popular crepe weave synthetic panel fabric. It's manufactured from 100% recycled polyester saving virgin raw materials and for a reduced environmental footprint. With a non lustrous appearance, its bold and bright colour palette is designed to complement the Xtreme range for upholstery.

Lucia is certified to the EU Ecolabel.



## Technical information

### UK

#### Composition

100% Recycled Polyester.  
Non metallic dyestuffs

#### Width

170cm minimum

#### Weight

260g/m2 ±5% (440g/lin.m ±5%)

#### Flammability

BS EN 1021 - 1:2006 (cigarette)  
BS EN 1021 - 2:2006 (match)  
BS 7176:2007 Low Hazard  
BS 476 Part 7 Class 1

*Note: Flammability performance is dependent on foam used.*

#### \*Light Fastness

6 (ISO 105 - B02:2013)

#### \*Fastness to Rubbing

Wet: 4, Dry: 4 (ISO 105 - X12:2002)

#### Cleaning

Vacuum regularly. Wipe clean with a damp cloth or shampoo using proprietary upholstery shampoo.

\* Tested in accordance with BS 2543:1995/2004. Please note that seam performance is dependent on seam construction and needle and thread type. We recommend that appropriate sewing advice be taken.

**Note:** Batch to batch variations in shade may occur within commercial tolerances. We reserve the right to alter technical specifications without notice. The Unregistered Design Rights and the Copyright in all designs are the exclusive property of Camira Fabrics Limited.

### D

#### Zusammensetzung

100% Recycelte Polyester.  
Nicht schwermetallhaltige Farbstoffe

#### Breite

170cm nutzbare Breite

#### Gewicht

260g/m2 ±5% (440g/lfd.M ±5%)

#### Feuersicherung

BS EN 1021 - 1:2006 (Zigarettestest)  
BS EN 1021 - 2:2006 (Streichholztest)  
BS 7176:2007 Low Hazard  
BS 476 Part 7 Class 1

*Bemerkung: Schwerentflammbarkeit hängt von verwendetem Schaum ab.*

#### \*Lichtechtheit

6 (ISO 105 - B02:2013)

#### \*Reibechtheit

Nass: 4, Trocken: 4 (ISO 105 - X12:2002)

#### Reinigung

Regelmässig staubsaugen. Dazu mit einem feuchten Tuch abwischen, oder mit einem speziellen Polsterschaum behandeln.

\* Wurde nach BS 2543:1995/2004 getestet. Eine optimale Nahtausreissfestigkeit hängt von der Nahtfahne, der verwendeten Nadel und dem Näh-Garn ab. Wir empfehlen daher Nähversuche durchzuführen.

**Wichtig:** Handelsübliche Farbabweichungen können auftreten und berechtigen nicht zur Reklamation. Wir behalten uns die Änderung technischer Spezifikationen vor. Die registrierten und nicht registrierten Urheberrechte der Dessinierungen sind ausschliessliches Eigentum der Camira Fabrics Limited.

### Contact

UK Head Office:	+44 (0)1924 490491
Germany:	+49 7031 60 84 30
Scandinavia:	+45 32 55 20 01
France/Benelux:	+32 56 227 266
USA:	+1 317 484 0305
China:	+ 86 (0) 21 6133 1812

[www.camirafabrics.com](http://www.camirafabrics.com)



### F

#### Composition

100% Polyester Recyclé.  
Teintures non métalliques

#### Largeur

170cm minimum

#### Poids

260g/m2 ±5% (440g/m.l ±5%)

#### Flammabilité

BS EN 1021 - 1:2006 (cigarette)  
BS EN 1021 - 2:2006 (allumette)  
BS 7176:2007 Low Hazard  
BS 476 Part 7 Class 1

*Notez: Réaction au feu dépend de la mousse utilisée.*

#### \*Solidité à la lumière

6 (ISO 105 - B02:2013)

#### \*Solidité au Frottement

Mouillé: 4, Sec: 4 (ISO 105 - X12:2002)

#### Nettoyage

Aspirer régulièrement. Essuyer avec une étoffe humide ou nettoyer à l'aide d'un produit approprié pour tissus d'ameublement.

\* Testé selon la norme BS 2543: 1995/2004. Veuillez noter que la performance du joint dépend de sa construction ainsi que de l'aiguille et du type de fil utilisés.

**Remarque:** une variation de couleurs peut provenir (commerciallement tolérable). Nous réservons le droit de changer les spécifications techniques sans préavis. Les Droits de Conception non-enregistrés et les droits d'auteur de tous les motifs sont la propriété exclusives de Camira Fabrics Limited.

### ES

#### Composición

100% Poliéster Reciclado.  
Tintes no metálicos

#### Ancho

170cm mínimo

#### Peso

260g/m2 ±5% (440g/lin.m ±5%)

#### Inflamabilidad

BS EN 1021 - 1:2006 (cigarillo)  
BS EN 1021 - 2:2006 (cerilla)  
BS 7176:2007 Low Hazard  
BS 476 Part 7 Class 1

*Condiciones ignifugas dependientes del tipo de foam utilizado.*

#### \*Solidez a la luz

6 (ISO 105 - B02:2013)

#### \*Solidez al rozamiento

Húmedo: 4, Seco: 4 (ISO 105 - X12:2002)

#### Limpieza

Limpiar con aspiradora frecuentemente. Bien lavar con un paño húmedo o con un champú apropiado para tapicería.

\* Probado de acuerdo con la norma BS 2543:1995 / 2004. Tenga en cuenta que el rendimiento de la costura depende de la construcción de la costura, además de la aguja y del tipo de rosca. Le recomendamos que se aconsejen para coser la costura.

**Nota:** las variaciones de lote a lote en la sombra se puede producir dentro de tolerancias comerciales. Nos reservamos el derecho a efectuar modificaciones técnicas sin previo aviso. Los derechos sobre los diseños no registrados y los derechos de autor en todos los diseños son propiedad exclusiva de Camira Fabrics Limited.

# camira

style with substance

[www.camirafabrics.com](http://www.camirafabrics.com)

# Lucia



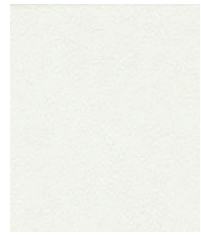
Panels



Environmental



Year guarantee



**Adobo**  
YB165



**Turtle**  
YB098



**Arecibo**  
YB099



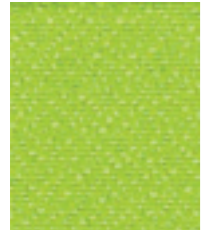
**Rum**  
YB086



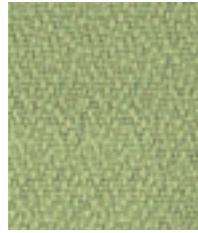
**Oyster**  
YB107



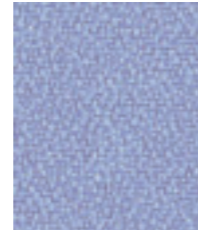
**Solano**  
YB088



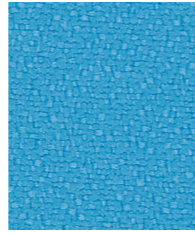
**Madura**  
YB156



**Apple**  
YB096



**Bermuda**  
YB084



**Marianna**  
YB157



**Reef**  
YB085



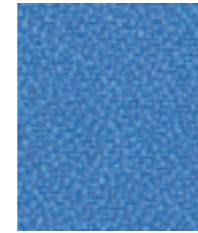
**Aruba**  
YB093



**Campeche**  
YB301



**Steel**  
YB095



**Bluebell**  
YB097



**Slip**  
YB094



**Sandstorm**  
YB302



**Tortuga**  
YB168



**Lobster**  
YB087



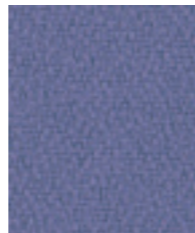
**Windjammer**  
YB047



**Montserrat**  
YB011



**Bluefield**  
YB021



**Mauve**  
YB069



**Buru**  
YB170



**Diablo**  
YB101



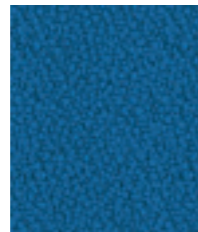
**Belize**  
YB105



**Jamaica**  
YB027



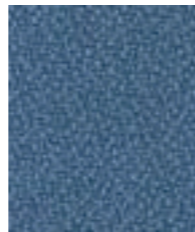
**Taboo**  
YB045



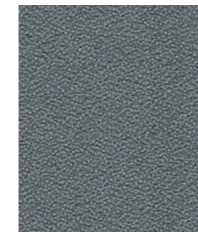
**Scuba**  
YB089



**Curacao**  
YB005



**Martinique**  
YB004



**Blizzard**  
YB108



**Tequila**  
YB038



**Bridgetown**  
YB102



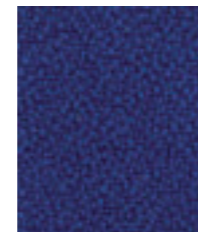
**Calypso**  
YB106



**Sombrero**  
YB046



**Costa**  
YB026



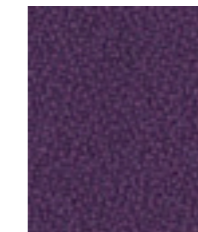
**Ocean**  
YB100



**Cayman**  
YB024



**Paseo**  
YB019



**Tarot**  
YB090



**Tobago**  
YB030



**Havana**  
YB009